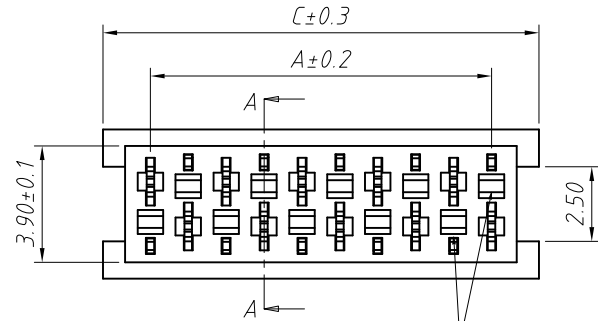
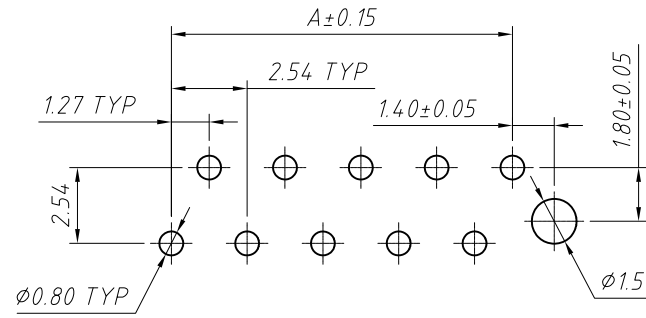


1 RoHS Compliance



REFERENCE MATING INTERFACE PATTERN:
1.27 STAGGERED PITCH×1.5 ROW-DISTANCE

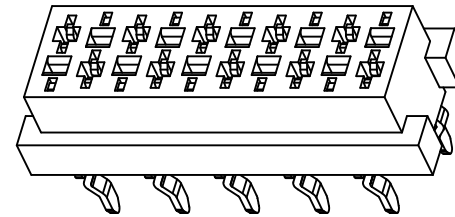
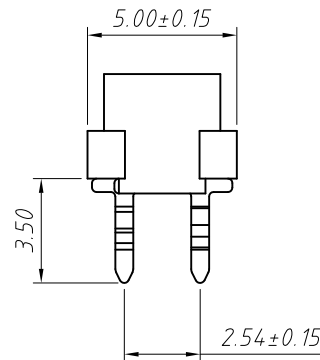
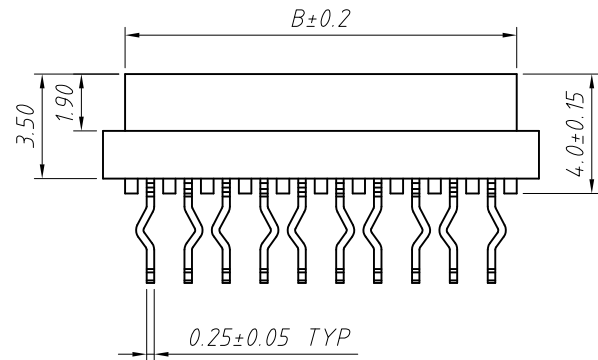


Recommended P.C.B Layout

Material:
Housing:PBT Glass Fiber, UL94V-0
Contacts:Phosphor Bronze
Plating:Sn over Ni

Electrical Characteristics:
Current Rating: 1.0 AMP
Contact Resistance: 20m Ohm max.
Insulator Resistance: 1000M Ohm min.
Withstand voltage:500V AC
Operating Temperature: -40°C ~ +105°C

Poles	DIM.A	DIM.B	DIM.C	Qty/Tube
04	3.81	5.50	6.99	82
06	6.35	8.04	9.53	60
08	8.89	10.58	12.07	48
10	11.43	13.12	14.61	39
12	13.97	15.66	17.15	33
14	16.51	18.20	19.69	29
16	19.05	20.74	22.23	26
18	21.59	23.28	24.77	23
20	24.13	25.82	27.31	21
22	26.67	28.36	29.85	19
24	29.21	30.90	32.39	17
26	31.75	33.44	34.93	16



Order Information:

L-KLS1-204F-XX-R-□

L: RoHS

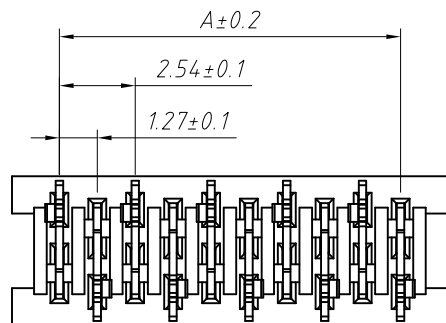
Pitch:2.54mm

XX-No.of 04 ~ 26pin

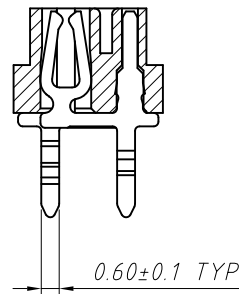
Color:R-Red B-Black

Material:

A=PBT D=PA9T E=PA46



SECTION A-A



ANGLE TOLERANCE	PROJECTION	Description:
±3°		Micro Match Socket Connector Female DIP 180 Type
GENERAL TOLERANCE	UNITS	mm
x.x ±0.30	SHEET SIZE	A4
x.xx ±0.20	Draw:	Daniel 2018-07-10
x.xxx ±0.10	Check:	Daniel 2018-07-10



NingBo KLS ELECTRONIC CO.,LTD.