

»» Features

- Flat pack miniature PCB Relays.
- High rating 16A 125VAC, 16A 277VAC.
- Optional with 187 quick connect terminals.
- SPNO, SPDT of contact configuration.
- Sealed flux free or sealed washable version of choices.
- Comply with RoHS-Directive 2002/95/EC.

»» Type List

◆ Standard Type

| Terminal style | Contact form | UL Insulation system approval | Designation | | |
|--------------------------------------|--------------|-------------------------------|---------------|---------------|----------------------|
| | | | Flux tight | Sealed type | Sealed type washable |
| PCB terminal | 1A (SPNO) | F | 201-1AC-F-C | 201-1AC-F-V | 201-1AC-F-S |
| | | | 201-1AH-F-C | 201-1AH-F-V | 201-1AH-F-S |
| | 1C (SPDT) | F | 201-1CC-F-C | 201-1CC-F-V | 201-1CC-F-S |
| | | | 201-1CH-F-C | 201-1CH-F-V | 201-1CH-F-S |
| WP (PCB terminal and Quick terminal) | 1A (SPNO) | F | 201WP-1AC-F-C | 201WP-1AC-F-V | 201WP-1AC-F-S |
| | | | 201WP-1AH-F-C | 201WP-1AH-F-V | 201WP-1AH-F-S |

◆ High Sensitivity Type

| | | | | | |
|--------------------------------------|--------------|---|----------------|----------------|----------------|
| PCB terminal | 1A (SPNO) | F | 201N-1AC-F-C | 201N-1AC-F-V | 201N-1AC-F-S |
| | | | 201N-1AH-F-C | 201N-1AH-F-V | 201N-1AH-F-S |
| WP (PCB terminal and Quick terminal) | 1A (SPNO) | F | 201WPN-1AC-F-C | 201WPN-1AC-F-V | 201WPN-1AC-F-S |
| | | | 201WPN-1AH-F-C | 201WPN-1AH-F-V | 201WPN-1AH-F-S |

»» Ordering Information

201 - 1C H - - C
 1 2 3 4 5 6 7

- | | |
|---|-------------------------------|
| 1. 201 -- Basic series designation | 5. C -- Contact material AgNi |
| | H -- Contact material AgSnO |
| 2. Blank -- PCB terminals | |
| WP -- PCB terminals + quick terminals (only for 1A) | 6. Blank -- Standard type |
| | F -- Class F |
| 3. Blank -- Standard type | |
| N -- High sensitivity type (only for 1A) | 7. C -- Flux tight |
| | V -- Sealed type |
| 4. 1A -- Single pole normally open | S -- Sealed type washable |
| 1C -- Single pole double throw | |

»» Contact Rating

| | |
|-------------------------|----------------------|
| Rated load (resistive) | NO/NC: 12A/8A 240VAC |
| Max. switching current | 12A |
| Max. switching voltage | 277VAC |
| Max. switching capacity | 2880VA |

»» Coil Rating (DC)

◆ Standard Type

| Rated voltage (V) | Rated current ±10 % at 23°C (mA) | Coil resistance ±10 % at 23°C (Ω) | Max. continuous voltage at 70°C | Pick up voltage(Max) at 23°C | Drop out voltage(Min) at 23°C | Power consumption at rated voltage |
|----------------------|--|---|---------------------------------------|------------------------------------|-------------------------------------|--|
| 3 | 133 | 22.5 | 150 % of rated voltage | 75 % of rated voltage | 5 % of rated voltage | approx. 0.4W |
| 5 | 80 | 62.5 | | | | |
| 6 | 66.7 | 90 | | | | |
| 9 | 44.4 | 202.5 | | | | |
| 12 | 33.3 | 360 | | | | |
| 15 | 26.7 | 562.5 | | | | |
| 18 | 22.2 | 810 | | | | |
| 24 | 16.7 | 1440 | | | | |
| 36 | 11.1 | 3240 | | | | |
| 48 | 8.3 | 5760 | | | | |
| 60 | 6.7 | 9000 | 130 % of rated voltage | 70 % of rated voltage | | approx. 0.6W |
| 100 | 6.0 | 16667 | | | | |

◆ High Sensitivity Type (for IA type)

| Rated voltage (V) | Rated current ±10 % at 23°C (mA) | Coil resistance ±10 % at 23°C (Ω) | Max. continuous voltage at 70°C | Pick up voltage(Max) at 23°C | Drop out voltage(Min) at 23°C | Power consumption at rated voltage |
|----------------------|--|---|---------------------------------------|------------------------------------|-------------------------------------|--|
| 3 | 66.7 | 45 | 160 % of rated voltage | 75 % of rated voltage | 5 % of rated voltage | approx. 0.2W |
| 5 | 40 | 125 | | | | |
| 6 | 33.3 | 180 | | | | |
| 9 | 22.2 | 405 | | | | |
| 12 | 16.7 | 720 | | | | |
| 15 | 13.3 | 1125 | | | | |
| 18 | 11.1 | 1620 | | | | |
| 24 | 8.3 | 2880 | | | | |
| 36 | 5.6 | 6480 | | | | |
| 48 | 4.2 | 11520 | | | | |
| 60 | 3.3 | 18000 | | | | |

201

»» Specification

| | | |
|--------------------------------------|--|---|
| Contact material | AgSnO / AgNi alloy | |
| Contact resistance ⁽¹⁾ | 100mΩ Max. (1A/6VDC by 4 pipes mΩ meter) | |
| Operate time ⁽¹⁾ | 10ms Max. | |
| Release time ⁽¹⁾ | 10ms Max. | |
| Insulation resistance ⁽¹⁾ | 1000 MΩ Min. (DC 500V) | |
| Dielectric strength ⁽¹⁾ | Between open contact | : AC 1000V , 50/60Hz 1 min. |
| | Between contact and coil | : AC 2500V , 50/60Hz 1 min. |
| Vibration resistance | Operating extremes | 10~55Hz , amplitude 1.6 mm |
| | Damage limit | 10~55Hz , amplitude 2 mm |
| Shock resistance | Operating extremes | 20G |
| | Damage limits | 100G |
| Life expectancy | Mechanical | 10,000,000 operations (frequency 18,000 operations/hr) |
| | Electrical | 100,000 operations (frequency 1,200 operations/hr) |
| Operating ambient temperature | -40°C~+70°C (no freezing) | |
| Weight | Approx. 8g | |

Notes : (1) initial value

»» Safety Approval

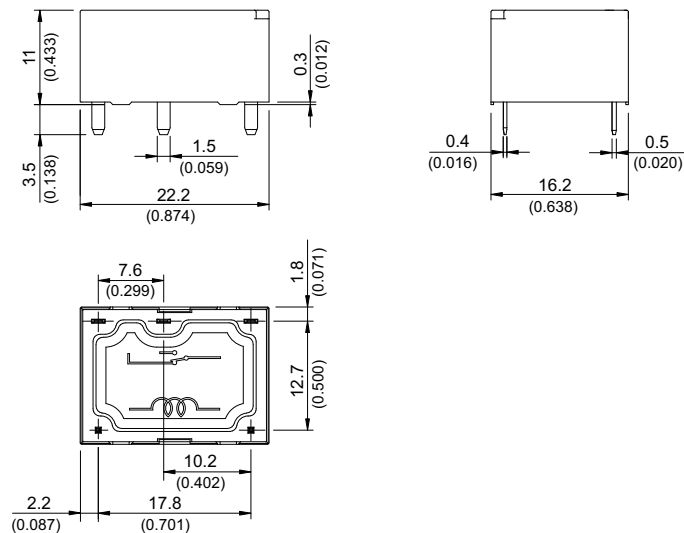
| | | |
|-----------|----------|-----------|
| Certified | UL / CUL | TUV |
| File No. | E88991 | R50044821 |

»» Safety Approval Rating

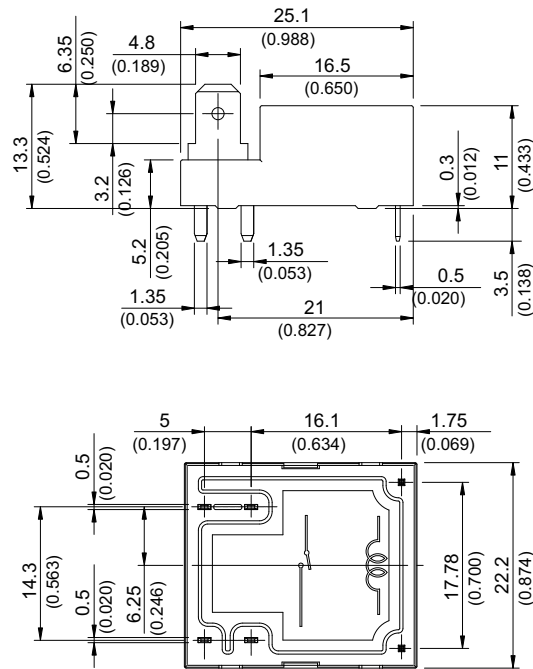
| | |
|---|------------------------------------|
| UL / CUL | TUV |
| NO : 16A 277VAC NC : 10A 277VAC NO/NC : 1/10HP,125VAC/277VAC (only for H,HA type) | NO : 16A 250VAC NC : 10A 250VAC |

»» Outline Dimensions

◆201



◆201WP



»» Wiring Diagram
BOTTOM VIEW

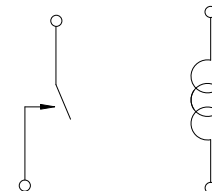
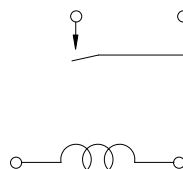
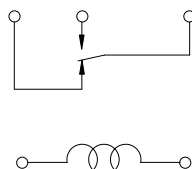
◆201

◆201WP

1C

1A

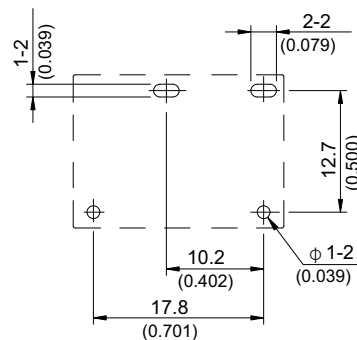
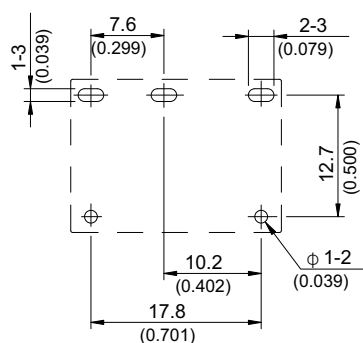
1A



»» PC Board Layout
BOTTOM VIEW

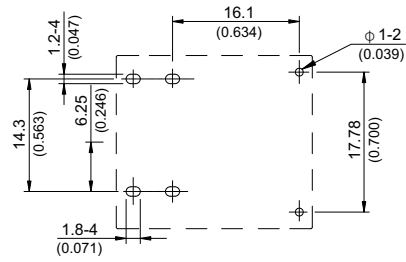
◆201 1C

◆201 1A



201

◆ 201WP 1A



»» Engineering Data

