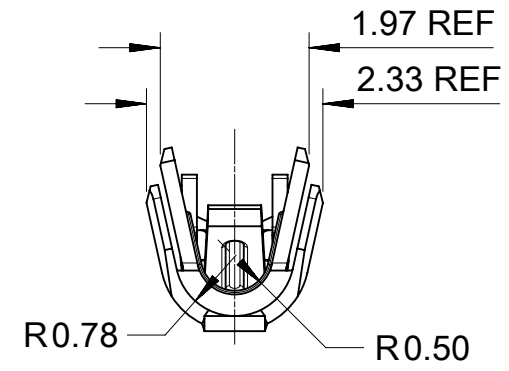
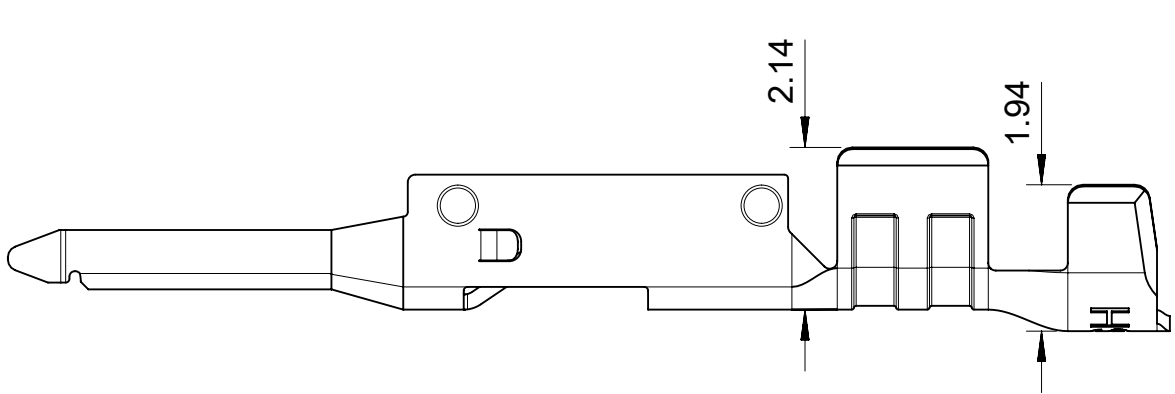


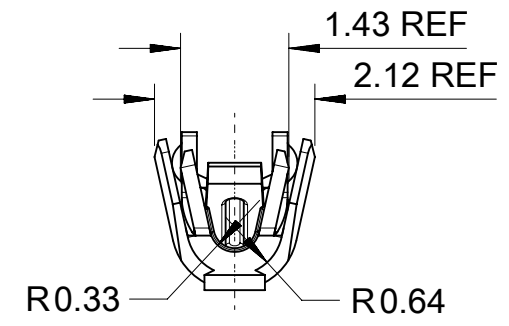
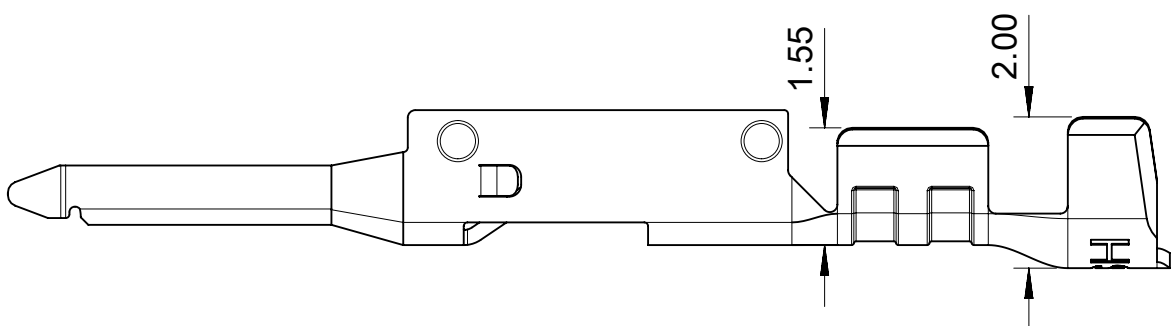
- NOTES:
1. MATERIAL: HIGH CONDUCTIVITY COPPER ALLOY.
 2. PLATING FINISH SEE CHART IN SHEET 3.
 3. PRODUCT SPECIFICATION: 2014471000-PS.
 4. PACKAGE SPECIFICATION: 2014471000-PK.
 5. THE TERMINAL IS LUBRICATED.
 6. THE COMPONENT COMPLIANT TO RoHS DIRECTIVE 2011/65/EU AND ELV DIRECTIVE 2000/53/EC.
 7. PRODUCT APPLY TO RECEPTACLE HOUSING OF 200277**** AND 201444****.
 8. PARTS CONFORM TO CLASS 'B' REQUIREMENTS OF COSMETIC SPECIFICATION PS-45499-002.
 9. APPLICATION SPECIFICATION: 2014471000-AS.
 10. RECOMMENDED INSULATOR:
20AWG WIRE, OD 1.60MM MAX.
24AWG WIRE, OD 1.30MM MAX.

THIS DRAWING CONTAINS INFORMATION THAT IS PROPRIETARY TO MOLEX ELECTRONIC TECHNOLOGIES, LLC AND SHOULD NOT BE USED WITHOUT WRITTEN PERMISSION												
DIMENSION UNITS		SCALE	CURRENT REV DESC:					<div>molex</div>				
mm		10:1										
GENERAL TOLERANCES (UNLESS SPECIFIED)			EC NO: 749038 DRWN: GLLI 2023/05/10 CHK'D: XQZHANG 2023/05/25 APPR: XQZHANG 2023/05/25					SALES DRAWING OF PLUG TERMINAL				
ANGULAR TOL ± °								PRODUCT CUSTOMER DRAWING				
4 PLACES		±										
3 PLACES		± 0.1										
2 PLACES		± 0.2										
1 PLACE		± 0.3	INITIAL REVISION: DRWN: GLLI 2018/07/20 APPR: AYIN 2019/04/17					DOCUMENT NUMBER		DOC TYPE	DOC PART	REVISION
0 PLACES		±						2014471000-SD		PSD	000	B1
DRAFT WHERE APPLICABLE MUST REMAIN WITHIN DIMENSIONS			THIRD ANGLE PROJECTION		DRAWING	SERIES	MATERIAL NUMBER		CUSTOMER		SHEET NUMBER	
					A3-SIZE	201447			GENERAL MARKET		1 OF 3	

DOCUMENT STATUS	P1	RELEASE DATE	2023/05/25	00:11:21
-----------------	----	--------------	------------	----------

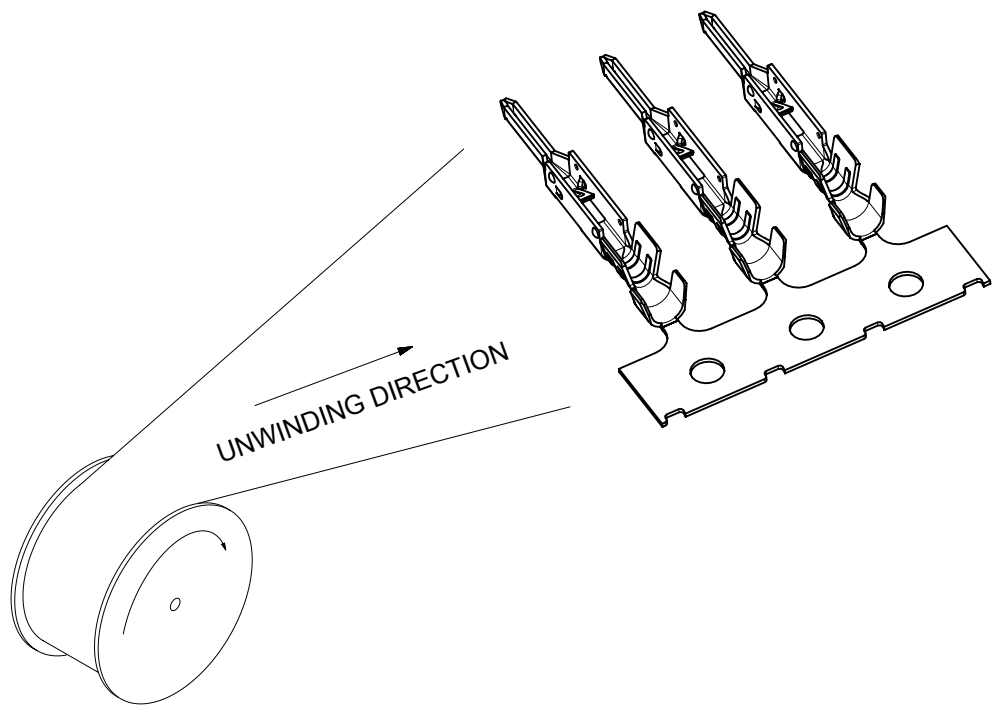


ONLY FOR WIRE OF AWG 20/22

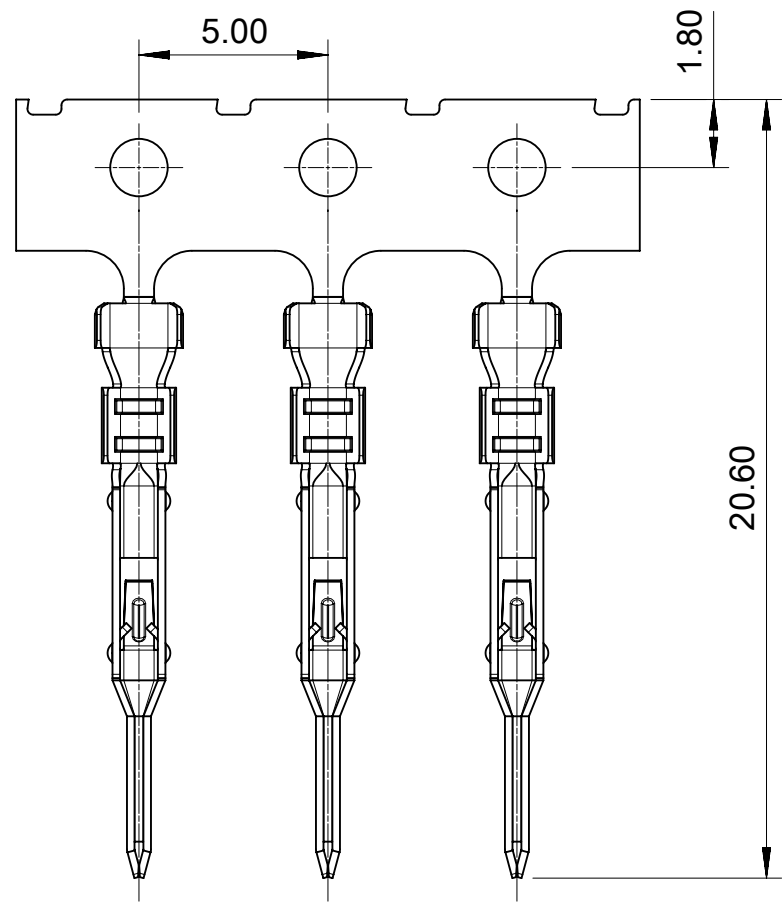


ONLY FOR WIRE OF AWG 24/26

THIS DRAWING CONTAINS INFORMATION THAT IS PROPRIETARY TO MOLEX ELECTRONIC TECHNOLOGIES, LLC AND SHOULD NOT BE USED WITHOUT WRITTEN PERMISSION												
DIMENSION UNITS mm		SCALE 10:1		CURRENT REV DESC: EC NO: 749038 DRWN: GLLI 2023/05/10 CHK'D: XQZHANG 2023/05/25 APPR: XQZHANG 2023/05/25 INITIAL REVISION: DRWN: GLLI 2018/07/20 APPR: AYIN 2019/04/17			molex SALES DRAWING OF PLUG TERMINAL					
GENERAL TOLERANCES (UNLESS SPECIFIED)										PRODUCT CUSTOMER DRAWING		
ANGULAR TOL ± °												
4 PLACES	±									DOCUMENT NUMBER 2014471000-SD		DOC TYPE PSD
3 PLACES	±	0.1										
2 PLACES	±	0.2										
1 PLACE	±	0.3										
0 PLACES	±											
DRAFT WHERE APPLICABLE MUST REMAIN WITHIN DIMENSIONS				THIRD ANGLE PROJECTION 		DRAWING A3-SIZE	SERIES 201447	MATERIAL NUMBER		CUSTOMER GENERAL MARKET		SHEET NUMBER 2 OF 3



PART NUMBER (WITH LUBE)	PART NUMBER (WITHOUT LUBE)	PLATING TYPE	WIRE SIZE(AWG)
201447-1400	N/A	A	24/26
N/A	201447-1200	B	
201447-1600	201447-1300	C	
N/A	201447-1800	D	
201447-2400	N/A	A	20/22
N/A	201447-2200	B	
201447-2600	201447-2300	C	
N/A	201447-2800	D	



PLATING SPECIFICATION	
A	REFLOW MATTE TIN 2.5 MICRONS MINIMUM OVERALL, UNDER NICKEL PLATING 1.25 MICRONS MINIMUM OVERALL.
B	GOLD PLATING 0.38 MICRONS MINIMUM ON CONTACT AREA, MATTE TIN 2.5 MICRONS MINIMUM ON CRIMP AREA, UNDER NICKEL PLATING 1.25 MICRONS MINIMUM OVERALL.
C	GOLD PLATING 0.76 MICRONS MINIMUM ON CONTACT AREA, MATTE TIN 2.5 MICRONS MINIMUM ON CRIMP AREA, UNDER NICKEL PLATING 1.25 MICRONS MINIMUM OVERALL.
D	GOLD PLATING 0.025 MICRONS MINIMUM ON CONTACT AREA, MATTE TIN 1.5 MICRONS MINIMUM ON CRIMP AREA, UNDER NICKEL PLATING 1.25 MICRONS MINIMUM OVERALL.