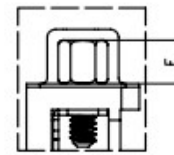
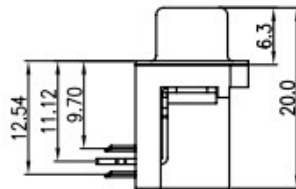
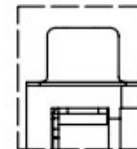


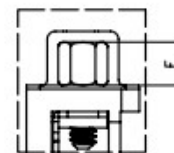
RECOMMEND PCB LAYOUT(TOLERANCE ± 0.05)
(VIEW FROM TOP SIDE)



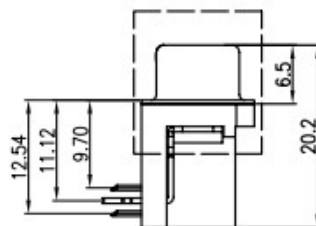
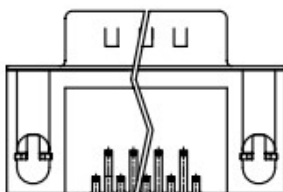
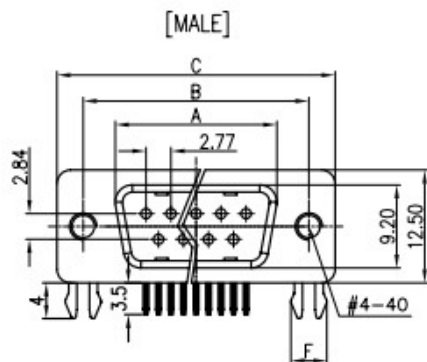
WITH SCREW TYPE



WITH RIVET TYPE



WITH SCREW AND RIVET TYPE



Dimension

Position	A ± 0.2	B ± 0.2	C ± 0.2	D
9	17.90	24.99	30.80	16.33
15	26.50	33.32	39.14	24.66
25	40.00	47.04	53.04	38.38
37	56.50	63.50	69.32	54.84

NOTES:

1. PRODUCTS PERFORMANCE:

- 1.0 VOLTAGE RATING: 250V AC.
- 1.1 CONTACT CURRENT RATING: 1.5A MAX. PER PIN.
- 1.2 CONTACT RESISTANCE: 20m Ω MAX.
- 1.3 DIELECTRIC WITHSTANDING VOLTAGE: 500V AC(rms) FOR 1 MINUTE.
- 1.4 INSULATION RESISTANCE: 1000M Ω MINI.
- 1.5 OPERATING TEMPERATURE: -20°C~+70°C.