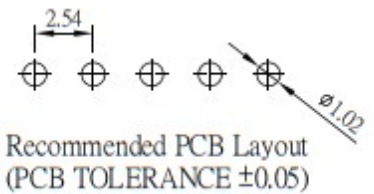
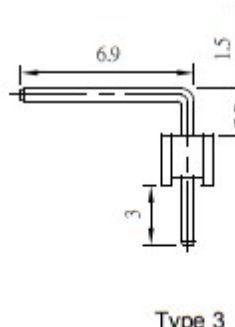
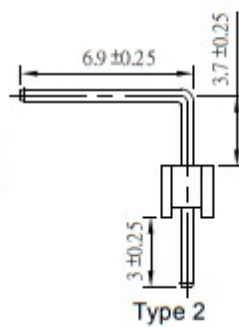
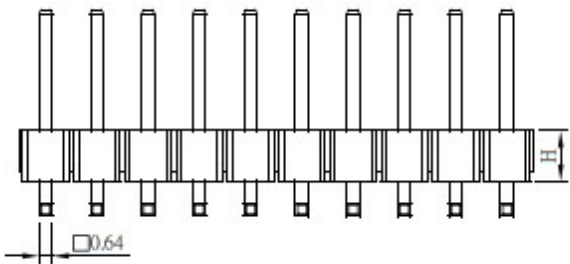
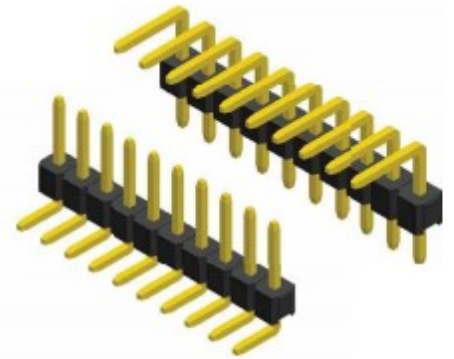
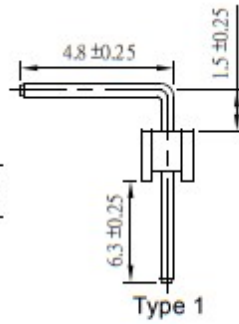
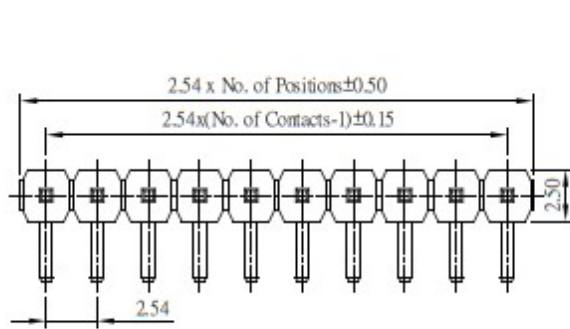


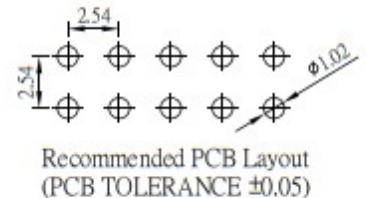
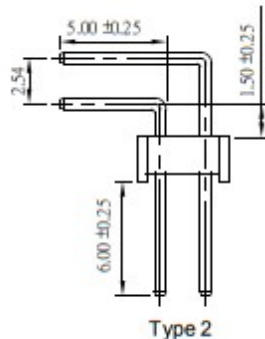
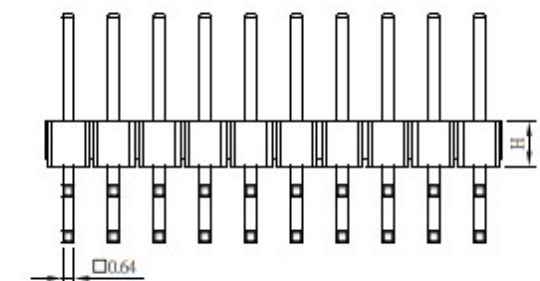
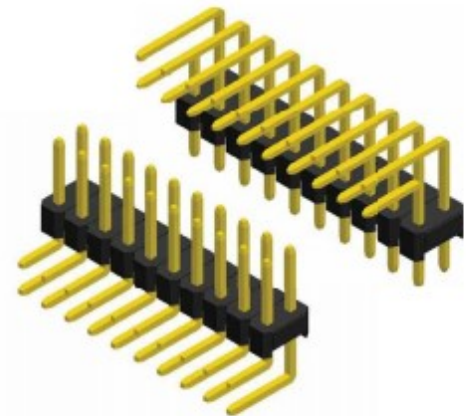
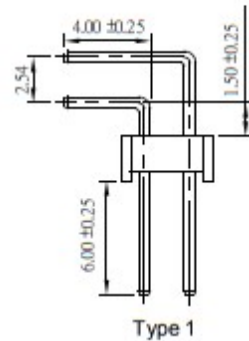
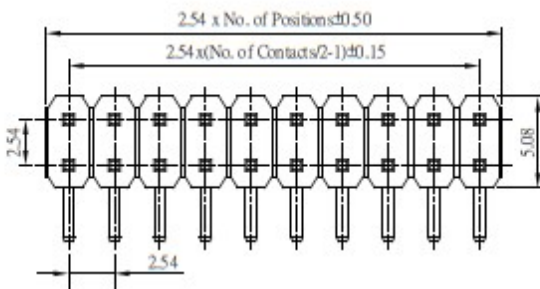
PLS-xxR, PLS-xxR2, PLS-xxR3

Pin Header 2.54mm 1 Row H=1.5/1.7/2.54mm Right Angle Type



PLD-xxR, PLD-xxR2

Pin Header 2.54mm 2 Row H=1.5/1.7/2.54mm Straight Type



SPECIFICATION

Current Rate: 3 AMP
 Insulation Resistance: 1000M Ω Min.
 Contact Resistance: 20m Ω Max.
 Dielectric Voltage: 1000V AC for one minute
 Operation Temperature: -40°C to +105°C

Standart height (H) = 2.54

MATERIAL

Insulator: Polyester, UL 94V-0
 Standard: PBT or Nylon 6T
 Contact Pin: Copper Alloy
 Contact Plating: Gold Flash all over