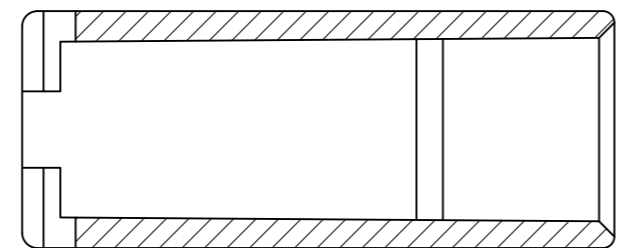
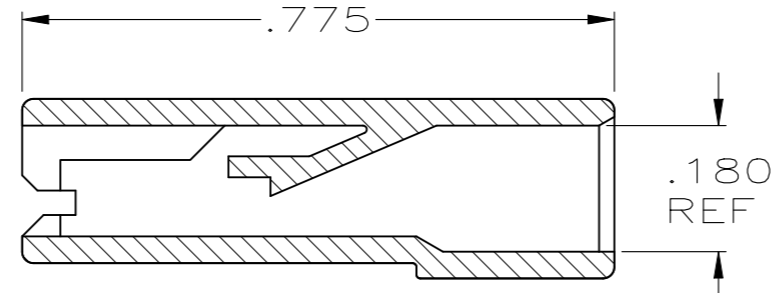
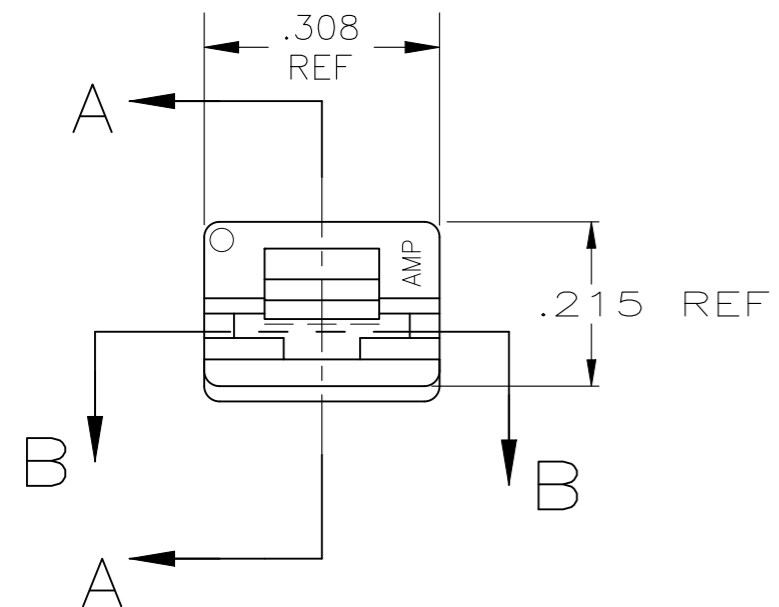


REVISIONS					
P	LTR	DESCRIPTION	DATE	DWN	APVD
	AU	REVISED PER ECR-23-175402	22JUN2023	DB	AF

- △1 FOR FOREIGN PRODUCTION ONLY.
- △2 PRELIMINARY - NOT FOR PRODUCTION.
- △3 POLYAMIDE ACCORDING TO IEC 60335-1, GLOW WIRE.
- △4 OBSOLETE PARTS: OBSOLETE CIS STREAMLINING PER D.RENAUD/D.SINISI.
- 5 ACCEPTS 187 SERIES FASTONS BUDGET AND PREMIER STYLE RECEPTACLES.
- △6 SUPERSEDE 2-480435-1 WITH 2-480435-3.



SECTION B-B
ROTATED 90° CW



SECTION A-A

FINISH	MATERIAL	PART NUMBER
BLACK	LCP-200°C	2-480435-3
NATURAL	PA6 NYLON, V0	2-480435-2
△6 SUPERSEDED	△3 66 NYLON, UL94, V0	2-480435-1
OBSOLETE	NATURAL	2-480435-0
△1	△3 NATURAL	1-480435-5
△4 OBSOLETE	△1 NATURAL	1-480435-4
△1 SUPERSEDED	△1 DYED BLACK	1-480435-3
△4 OBSOLETE	△1 DYED RED	1-480435-2
	6/6 NYLON	1-480435-0

NATURAL	PA66, UL94, V0	3-480435-1
BLACK	PA66/6, UL94, V0	480435-2
NATURAL	PA66/6, UL94, V0	480435-1
FINISH	MATERIAL	PART NUMBER

THIS DRAWING IS A CONTROLLED DOCUMENT.

DWN	JR RUTH	2/4/91
CHK	P FORTNEY	2/4/91
APVD	R KUZO	2/4/91
PRODUCT SPEC	-	
APPLICATION SPEC	-	
WEIGHT	0.000000	
CUSTOMER DRAWING		

STE TE Connectivity

NAME: HOUSING, RECEPTACLE, FASTON, .187 SERIES

SIZE	CAGE CODE	DRAWING NO	RESTRICTED TO
A3	00779	C-480435	-

SCALE: 4:1 SHEET: 1 OF 1 REV: AU