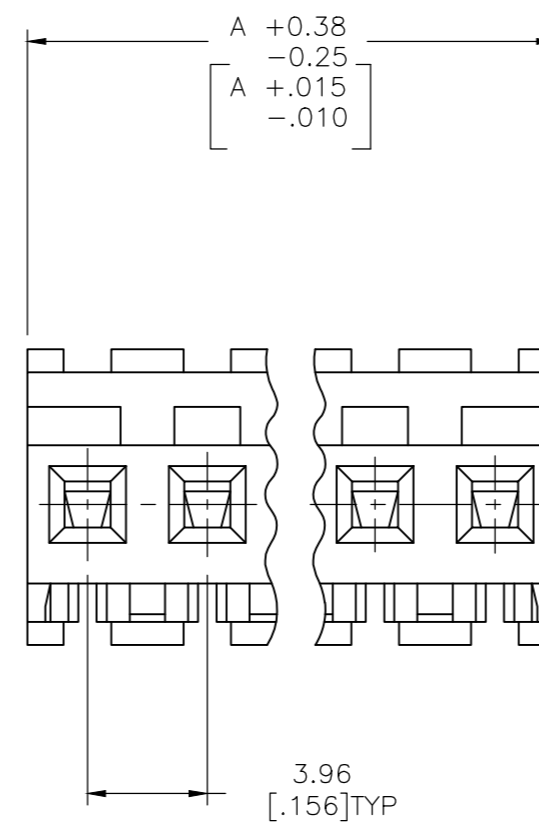
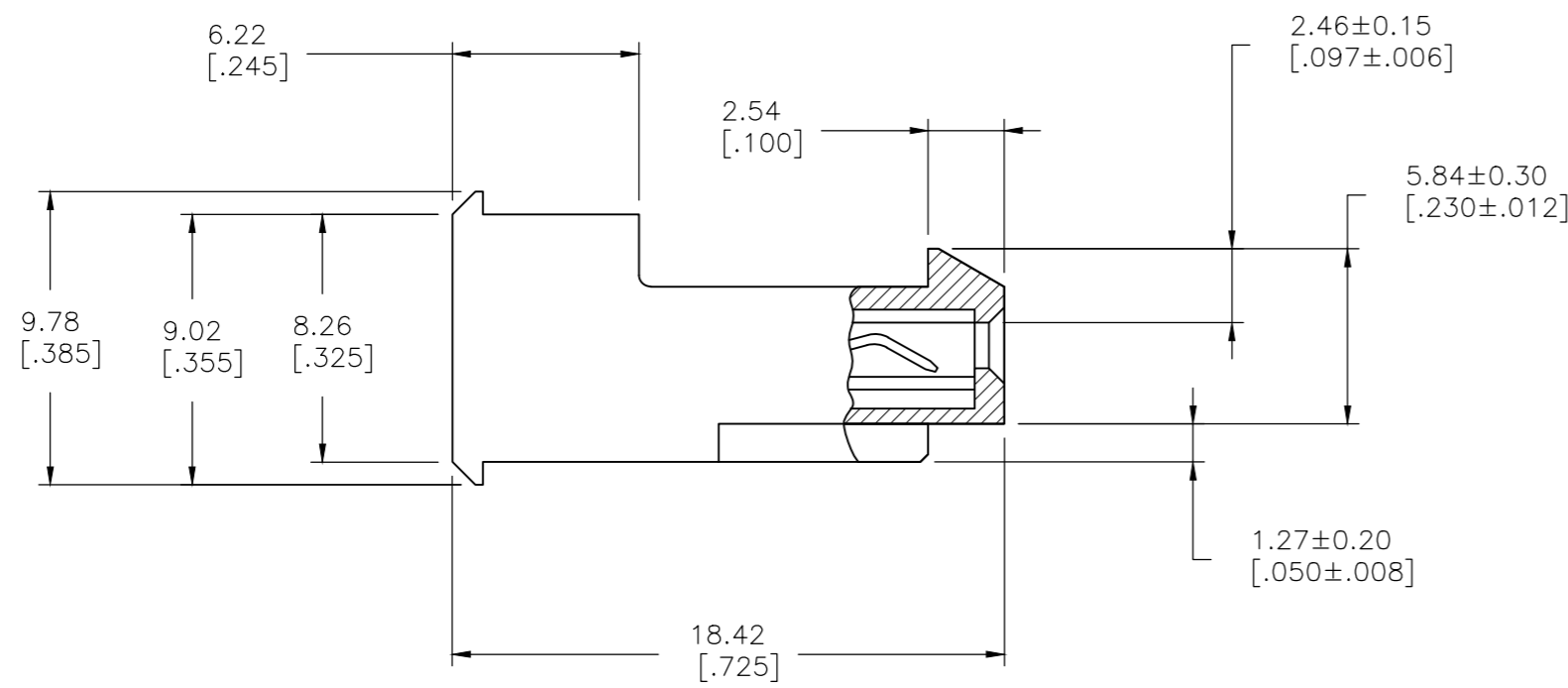
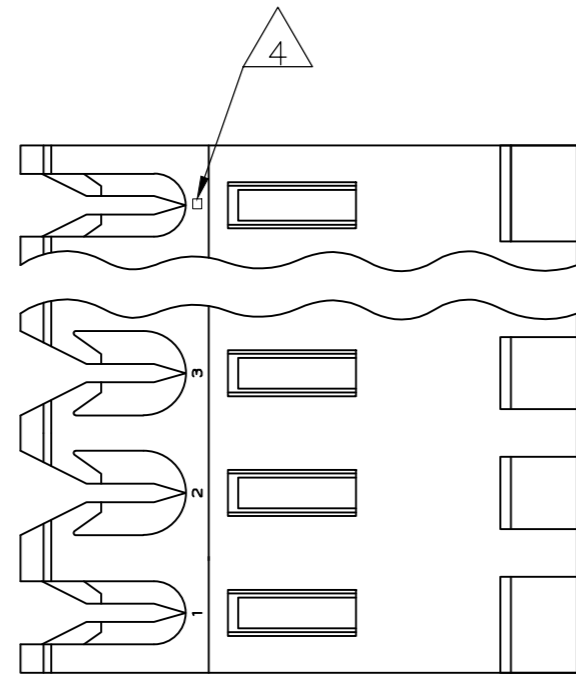


THIS DRAWING IS UNPUBLISHED. RELEASED FOR PUBLICATION
 © COPYRIGHT - By - TE CONNECTIVITY ALL RIGHTS RESERVED.

LOC	DIST	REVISIONS					
		P	LTR	DESCRIPTION	DATE	DWN	APVD
CM	00	U		REVISED PER ECR-20-000814	26MAY2020	PC	SW



95.10[3.744]	24	5-640599-4
91.13[3.588]	23	5-640599-3
87.17[3.432]	22	5-640599-2
83.21[3.276]	21	5-640599-1
79.25[3.120]	20	5-640599-0
75.29[2.964]	19	4-640599-9
71.32[2.808]	18	4-640599-8
67.36[2.652]	17	4-640599-7
63.40[2.496]	16	4-640599-6
59.44[2.340]	15	4-640599-5
55.47[2.184]	14	4-640599-4
51.51[2.028]	13	4-640599-3
47.55[1.872]	12	4-640599-2
43.59[1.716]	11	4-640599-1
39.62[1.560]	10	4-640599-0
35.66[1.404]	9	3-640599-9
31.70[1.248]	8	3-640599-8
27.74[1.092]	7	3-640599-7
23.77[.936]	6	3-640599-6
19.81[.780]	5	3-640599-5
15.85[.624]	4	3-640599-4
11.89[.468]	3	3-640599-3
7.92[.312]	2	3-640599-2

△ SUPERSEDED BY 5-640599-4	95.10[3.744]	24	2-640599-4
△ SUPERSEDED BY 5-640599-3	91.13[3.588]	23	2-640599-3
△ SUPERSEDED BY 5-640599-2	87.17[3.432]	22	2-640599-2
△ SUPERSEDED BY 5-640599-1	83.21[3.276]	21	2-640599-1
△ SUPERSEDED BY 5-640599-0	79.25[3.120]	20	2-640599-0
△ SUPERSEDED BY 4-640599-9	75.29[2.964]	19	1-640599-9
△ SUPERSEDED BY 4-640599-8	71.32[2.808]	18	1-640599-8
△ SUPERSEDED BY 4-640599-7	67.36[2.652]	17	1-640599-7
△ SUPERSEDED BY 4-640599-6	63.40[2.496]	16	1-640599-6
△ SUPERSEDED BY 4-640599-5	59.44[2.340]	15	1-640599-5
△ SUPERSEDED BY 4-640599-4	55.47[2.184]	14	1-640599-4
△ SUPERSEDED BY 4-640599-3	51.51[2.028]	13	1-640599-3
△ SUPERSEDED BY 4-640599-2	47.55[1.872]	12	1-640599-2
△ SUPERSEDED BY 4-640599-1	43.59[1.716]	11	1-640599-1
△ SUPERSEDED BY 4-640599-0	39.62[1.560]	10	1-640599-0
△ SUPERSEDED BY 3-640599-9	35.66[1.404]	9	1-640599-9
△ SUPERSEDED BY 3-640599-8	31.70[1.248]	8	1-640599-8
△ SUPERSEDED BY 3-640599-7	27.74[1.092]	7	1-640599-7
△ SUPERSEDED BY 3-640599-6	23.77[.936]	6	1-640599-6
△ SUPERSEDED BY 3-640599-5	19.81[.780]	5	1-640599-5
△ SUPERSEDED BY 3-640599-4	15.85[.624]	4	1-640599-4
△ SUPERSEDED BY 3-640599-3	11.89[.468]	3	1-640599-3
△ SUPERSEDED BY 3-640599-2	7.92[.312]	2	1-640599-2

- △ MATERIAL: CONNECTOR - NYLON UL94-V2 (ORANGE).
CONTACTS - 0.30[.012] THICK COPPER ALLOY (BRIGHT TIN-LEAD 0.00203[.000080] MIN. THICK FOR CONTACTS 640599-2 THRU 2-640599-4] (MATTE WHISKER MITIGATED TIN 0.00203[.000080] MIN THICKNESS OVER NICKEL UNDERPLATE FOR 3-640599-2 THRU 5-640599-4).
- 2 CONTACTS ACCEPT 18 AWG WIRE WITH 2.41[.095] MAX INSULATION DIAMETER.
- 3 CONTACTS MUST ACCEPT 1.14±0.03[.045±.001] SQUARE POST AND REMAIN LOCKED IN POSITION.
- △ IDENTIFICATION NUMBER FOR LAST CIRCUIT MAY NOT APPEAR ON ALL ASSEMBLIES.
- 5 DIMENSIONS IN BRACKETS ARE IN INCHES.
- 6 HOUSING FEATURES ARE: FEED-THRU WITH LOCKING RAMP.
- △ OBSOLETE PARTS: OBSOLETE CIS STREAMLINING PER D.RENAUD/D.SINIS
- △ OBSOLETE PARTS

THIS DRAWING IS A CONTROLLED DOCUMENT.		DWN S.CARPENTER 09JUL2003		
DIMENSIONS: mm [INCHES]		CHK D BOSSI 09JUL2003		
TOLERANCES UNLESS OTHERWISE SPECIFIED:		APVD D BOSSI 09JUL2003	NAME	
0 PLC ± -	1 PLC ± -	108-1051		
2 PLC ± -	3 PLC ± 0.13 [.005]	APPLICATION SPEC		
4 PLC ± -	ANGLES ± -	114-1020		
MATERIAL △	FINISH △	WEIGHT	SIZE A2	CAGE CODE 00779
CUSTOMER DRAWING		DRAWING NO C-640599		RESTRICTED TO -
		SCALE 4:1	SHEET 1 OF 1	REV U