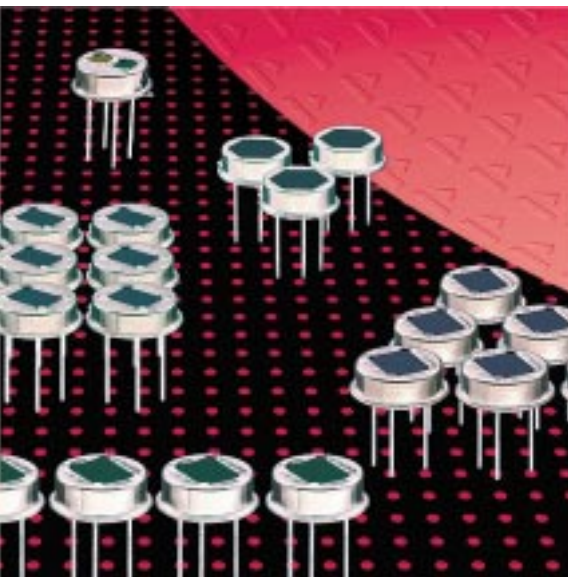


# Dual Element Detector LHi 906



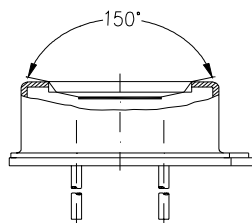
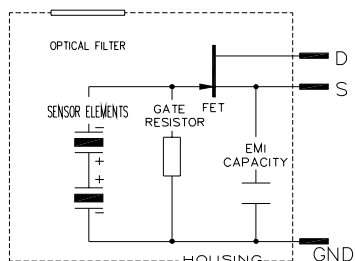
## Banana (Yin Yang) element design

## Single FET output

## Designed for ceiling mount applications

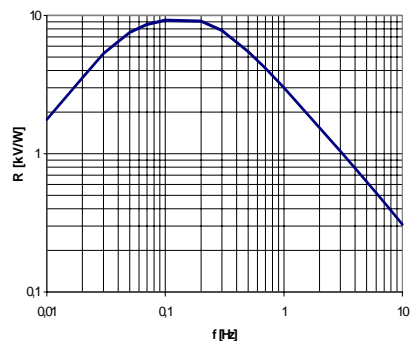
The **LHi 906** pyroelectric infrared-detector is a special design for motion control in ceiling mount applications. It includes a pyroelectric ceramic with 2 sensitive elements in round shape connected to one FET in source follower connection.

This detector is available in TO-5 housing with a standard infrared filter. It offers low noise, special field of view and capture for ceiling mount applications.

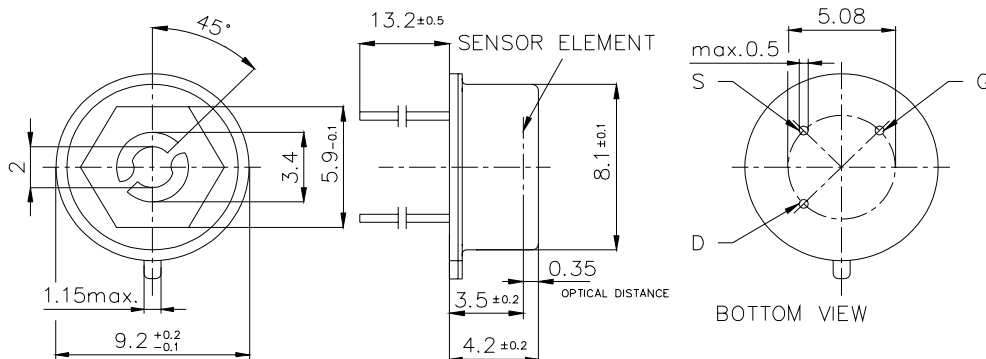


Field of View

Parameters	LHi 906			units	condition
	min	typical	max		
<b>Element size</b>	2,66			mm <sup>2</sup>	(2 round elemnts.)
<b>Responsivity</b>	2500	3000		V/W	100°C, 1 Hz
<b>Match</b>		1	10	%	
<b>Noise</b>		20	50	µVpp	25°C, 0,3...10Hz
<b>Offset Voltage</b>	0,2		1,5	V	R <sub>s</sub> =47kΩ, 25°C
<b>NEP</b>		7,5x10 <sup>-10</sup>	23x10 <sup>-10</sup>	W √Hz	1Hz Bw, 100°C, 1 Hz
<b>D*</b>	6x10 <sup>7</sup>	19x10 <sup>7</sup>		cm √Hz/W	1Hz Bw, 100°C, 1 Hz
<b>Output Impedance</b>		5	10	kΩ	R <sub>s</sub> =47kΩ, 25°C
<b>Operating Voltage</b>	2		15	V	R <sub>s</sub> =47kΩ, 25°C
<b>Field of View, horizontal</b>		150°			unobstructed
<b>Field of View, vertical</b>		150°			unobstructed
<b>Operating Temp.</b>	-40		85	°C	non permanent
<b>Storage Temperature</b>	-40		85	°C	non permanent



Frequency Response



Dimensions in mm