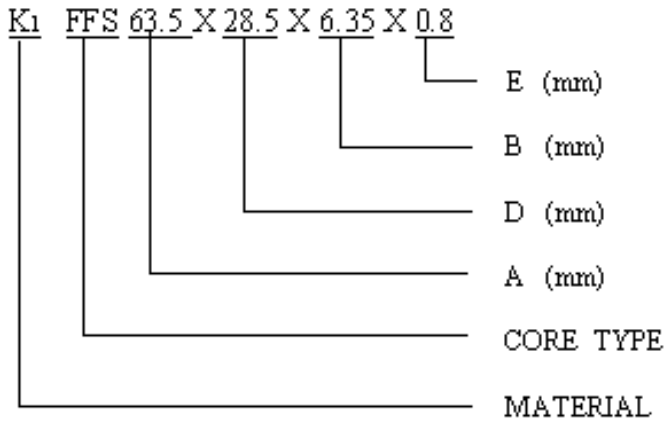
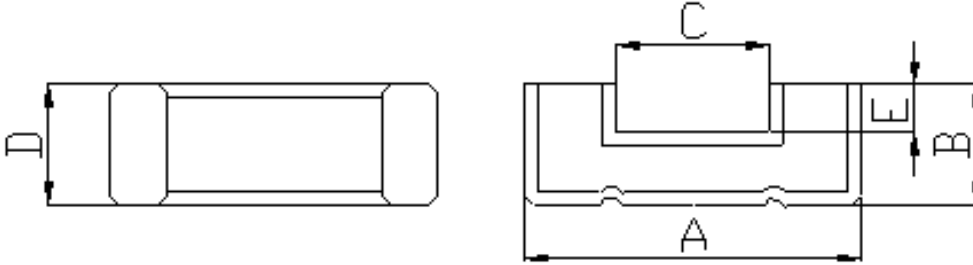


## ▼ FFS SERIES(FLAT CABLE SUPPRESSION CORES)

## • 1.ORDERING CODE



## 2.SHAPES



## 3.DIMENSIONS

.....Unit: mm

NO.	FERRICO PART NO.	A	B	C	D	E	IMPEDANCE( $\Omega$ ) TYP.	
							25MHz	100MHz
1	<u>K1 FFS</u> <u>16.75X8.15X2.1X0.5</u>	16.75 $\pm$ 0.4	2.1 $\pm$ 0.2	12.6 $\pm$ 0.4	8.15 $\pm$ 0.3	0.5 $\pm$ 0.2	27	70
2	<u>K1 FFS</u> <u>31.2X4.0X8.3X4.9</u>	31.2 $\pm$ 0.4	8.1 $\pm$ 0.4	25.0 $\pm$ 0.8	4.0 $\pm$ 0.3	4.9 $\pm$ 0.4	17	58
3	<u>K1 FFS</u> <u>38.0X12.7X6.35X0.84</u>	38.1 $\pm$ 0.76	6.35 $\pm$ 0.25	26.7 $\pm$ 0.76	12.7 $\pm$ 0.5	0.84 $\pm$ 0.25	54	130
4	<u>K1 FFS</u> <u>38.0X25.4X6.35X0.84</u>	38.1 $\pm$ 0.76	6.35 $\pm$ 0.25	26.7 $\pm$ 0.76	25.4 $\pm$ 0.5	0.84 $\pm$ 0.25	85	175
5	<u>K1 FFS</u> <u>45.0X28.5X6.35X0.8</u>	45.0 $\pm$ 1.0	6.35 $\pm$ 0.25	34.4 $\pm$ 0.7	28.5 $\pm$ 0.7	0.8 $\pm$ 0.2	87	190
6	<u>K1 FFS</u> <u>63.5X15.0X6.35X0.8</u>	63.5 $\pm$ 1.5	6.35 $\pm$ 0.25	52.0 $\pm$ 1.2	15.0 $\pm$ 0.4	0.8 $\pm$ 0.2	45	120

7	<u>K1 FFS</u> <u>63.5X28.5X6.35X0.8</u>	63.5±1.5	6.35±0.25	52.0±1.2	28.6±0.7	0.8± <sup>0.3</sup> <sub>0.2</sub>	83	277
8	<u>K1 FFS</u> <u>76.2X15.0X6.35X0.8</u>	76.2±1.5	6.35±0.4	65.3±1.3	15.0±0.64	0.8±0.25	45	125
9	<u>K1 FFS</u> <u>76.2X28.5X6.7X0.8</u>	76.2±1.5	6.35±0.25	65.3±1.3	28.6±0.7	0.8± <sup>0.3</sup> <sub>0.2</sub>	63	164
10	<u>K1 FFS</u> <u>80.0X12.5X5.0X1.35</u>	80.0± <sup>1.5</sup> <sub>1.0</sub>	5.1± 0.1	80.0± <sup>1.5</sup> <sub>1.0</sub>	12.5±0.5	1.35±0.15	28	86
11	<u>K1 FFS</u> <u>88.9X28.5X6.5X0.8</u>	88.9±1.8	6.5± 0.3	78.2±1.5	28.6±0.8	0.84±0.3	69	175
12	<u>K1 FFS</u> <u>102.0X12.7X7.85X2.4</u>	102.0±1.75	7.85± 0.25	91.0±0.8	12.7±0.4	2.4±0.25	31	95

REMARK : OTHER SIZE ARE AVAILABLE UPON REQUEST